



SOTIROPOULOS & ASSOCIATES S.A.
CONSULTING ENGINEERS

SOTIROPOULOS & ASSOCIATES S.A. is the leader of a group of companies, including **GEOMECHANIKI S.A.** and **HYDROEREVNA S.A.**, all active in the field of geotechnical engineering. **ERGOTEST S.A.**, also a member of the group, provides complete services in the field of quality control and quality assurance for civil engineering projects.

The group has a worldwide experience in more than ten foreign countries. It is based in Athens, Greece, in a 900m² area building.

It owns drilling rigs and relevant equipment, in-situ testing apparatus, and a state of the art Laboratory for Soil and Rock Mechanics. Also, a separate complete accredited materials testing laboratory, for quality control and testing of concrete asphalt, aggregates, cement etc.

The firm is certified with ISO 9001:2008. The Lab was the first in Greece to be accredited according to the Hellenic Accreditation System of ESYS and is awarded 1st place in the AMRL international competition, for the past five years.

As one of the pioneers and leading companies in Geotechnical Engineering, on a national scale, Sotiropoulos & Associates S.A. has been involved extensively, since 1965, in:

- Conceptual design of the project
- Field and laboratory geotechnical works
- Geological studies
- Geotechnical design
- Instrumentation

Within this scope, the company has been involved in many demanding projects in several countries, including heavy engineering works and always optimizing the projects taking into consideration the prevailing geotechnical site conditions.

GEOTECHNICAL CONSULTANTS

**SOTIROPOULOS & ASSOCIATES S.A.,
GEOMECHANIKI S.A. and HYDROEREVNA S.A.**
are a dynamic group of companies which specializes
in geotechnical investigation and design. The
group's activity originates in 1965.

Its experience as Geotechnical Consultants covers
heavy technical works in Greece as well as
overseas:

- People's Republic of China - India - Somalia - The
Philippines - Sudan - Egypt - Saudi Arabia - United
Arab Emirates - Comores Islands - Yemen etc.

MAIN AREAS OF ACTIVITY

GEOTECHNICAL INVESTIGATION

- Rotary coredrilling on land and sea
- Dutch cone including piezocone
- Vibrocoring
- Drilling Parameters Recording (enpasol)
- Pressiometer Testing
- Cross-Hole, Down-Hole Testing etc.

IN-SITU TESTING

- Vane Test
- Impression Test
- Recording of Vibrations
- Pile Loading Test



LABORATORY TESTING

- Soil and Rock Mechanics Testing:
Classification, Unconfined Compression, Direct
Shear, Vane Test, Relative Density, Oedometer test,
Proctor, CBR, Triaxial testing, Permeability testing,
Rock Core testing, Direct Shear of Rock
Discontinuities, Point Load, Los Angeles, Slake
Durability, Cerchar, Index, Determination of
Modulus of Elasticity and Poisson ratio.





GEOLOGICAL STUDIES—GEOPHYSICAL INVESTIGATION

- Geophysical investigation, Geoelectrical method, Seismic refraction, Surface Penetration Georadar, Gravitational method
- Geochemical analysis
- Petrographic examination of rocks

GEOTECHNICAL & GEOLOGICAL STUDIES

FOUNDATION

- Deep-Shallow
- Retaining Walls

SOIL IMPROVEMENT

- Dynamic Compaction
- Stone columns
- Vibroflotation
- Vertical Drains
- Deep Mixing of Soils etc.

OTHER STUDIES

- Embankments
- Tunnels
- Dams
- Harbor Works
- Landslides
- Deep excavations
- Pavements

GEOLOGICAL STUDIES

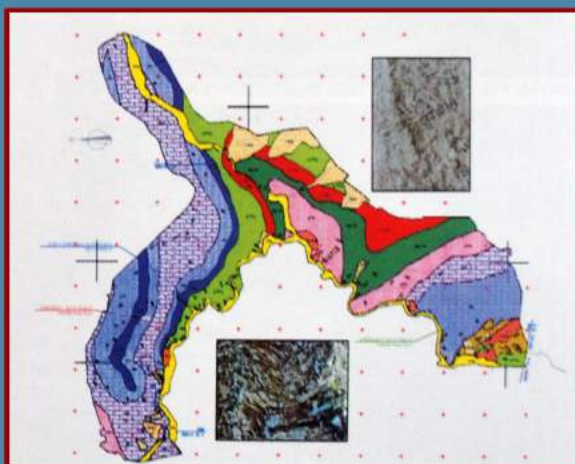
- Geological reconnaissance and mapping
- Tectonics - Structural Analysis of Rock masses
- Engineering Geological Studies
- Hydro geological studies

Field investigation and lab testing are executed by company owned equipment and by highly experienced technical personnel.

The lab is accredited by ELOT EN ISO/IEC 17025:2005.

The company's quality management is in conformance with ISO 9001:2008, and the international Total Quality Management Model QC100.

In 2010, the company has been granted by the International Arch of Europe, the BID award, in Gold category, for Quality and Technology.





SOTIROPOULOS & ASSOCIATES S.A.

GEOTECHNICAL CONSULTANTS

91 ETHNIKIS ANTISTASEOS STR, PALLINI, ATHENS, GREECE
TEL: (0030) 210-6032813, FAX: (0030) 210-6669019
email: geomsot@gmail.com, web: www.sotiropoulosandassociates.com